

## **Craven Corner Feeders**

The following information is per the sellers

**Permitted for 10,000 Feeder Cattle**

**3 Drilled Wells**

**Rural Water**

**Roughly 747.2 Acres**

- 436 acres Crop – 248 Acres is Feedlot & 4 Fenced Pastures

**Feedmill:**

- Buildings: 14x62, 20x62, 36x51 & 10x14
- Mill – 15 tph / 5500 bph
- Conveyers
- 80' Receiving Leg
- 70' Mill Leg
- 60' Center Leg
- 2) 1992 48,000 Bu Bins
- 3) 1995 5,000 Bu Co-Op Hopper Bins
  - Grain Legs Installed in 1992
- 4) 1500 Bu Square Loadout Bins
- 2) 6,000 Gal Plastic Tanks (Steer, Heifer & Starter Liquid)
- 1) 3,000 Gal Plastic Tanks (Steer, Heifer & Starter Liquid)
- 1) 3,000 Gal Plastic Tanks on Hopper Stand (10x14 Room)
- 12x60 Feed Truck Scale / 100,000 lbs. – Storm Cardinal
- 2) Eureka 6,340 Gal. Steel Tanks (2002)
- 2) Mil to Mil Leg SarTec 500 Gal & 1500 Gal Plastic Tanks

- SarTemp Controller Model Computer 90912 (2017)
- 48,000 Brain Bins – 32” Rings x 23 Rings
  - 60” Concrete Base
  - 48”x48” Re-Claim Tunnel
  - 12’x26’ w/ 3’ curve & 10” Incline Conveyor
  - South Leg 12”x18” / 5 HD Distributer
  - Center Leg 12”x18” / 5 HD Distributer
  - Mill Leg – 10 HD Distributer
  - 12”x10’ Incline Conveyor Between Receiving Leg \*  
Center Leg & Leg Conveyor
  - 3) Co-Op Bins – 6 Ring, 8 Leg Stands

## **Bunker Silos**

**Truck Scale:** 12’x110’ Mettler Toledo, Approach ads, Scale House

**Office Building:** 50’x112’ (12 Post) Frame Building Over the Top of the 18x62 Office Building

- Scale Room
- 2) ½ Bathrooms
- Kitchen
- Break Room
- Mechanical Room
- 10’x15’ Climate Controlled Medicine Room
- 12x80 Scale w/ Steel Deck
- 50x112 Building has 11x16 Overhead Door; 11x14 Overhead Door, 9x10 Overhead Door, 3 Ply Post, 12’ Eave, Spray Foam Insulation, 3 SVC Doors

**Main Processing Shed:** 48x46, Working Corral, Concrete Floor, Steel Tub & Livestock Chute, Silencer Hydro. Chute, 2) Loadout Chutes

**North Hospital Shed:** 40x134 w/16' Lean Addition, Partial Concrete Floor, 56' Chute & Tub, Hydro Squeeze Chute, Ritchie Waterer

**South Hospital Shed:** 32x128, Dirt Floor, 6x8 Medicine Room, 2) Ritchie Waterers, Tub, Schute, Hydro Chute

**Horse Barn:** 32x40 w/ 16x32 Concrete Floor, 12x29 Rear Lean Addition,  
**Tack Shed**

## **Feedlots**

**Pens:** 36 Pens w/ Drive by Lanes

- 29-31 ('06)
  - 8190 Lineal feet of Concrete Bunks
  - 4) Fenced Areas (Pasture) w/ Portable Feeders
  - Mostly Steel Post Gating
  - 5 Rail Sucker Rod
  - 115,472 Square Feet of Poured Concrete Aprons +/- at (Bunks)
  - 51,000 Square Feet of Poured Concrete Aprons in Cattle Working Area.
  - Bunk Area are lined w/ Sprinkler System

**Lagoon:** 2006, 432 x 530 x 10

- Lined
- Capacity (+/-) 17,100,000 Gal
- 15' W x 4' Deep Engineered Catch Basin (+/- 4,700 feet long)

**Water Room:** 2014, 24x48' – 18 Post Frame (Bunkline Sprinkler System)

- Concrete Floor
- Spray Foam Insulation

- 3) 10,000 Gal Rotomold Water Tanks
- 2) Goulds Pumps

**Shop #1:** 2010, 60 x 80 x 16

- Concrete Floor
- 14 x 20 Overhead Door
- 2) SVC Door
- In-Floor Heat
- 20 x 20 2<sup>nd</sup> Level Break Room
- 20 x 20 Lower Level Parts/Laundry/Bathroom

**Shop #2:** 40x100 – 14'

- Concrete Floor
- 16 x 12 Overhead Door
- 22 x 12 Overhead Door
- 2) SVC Doors

**Manager House:** 1976, 34 x 26 & 28 x 24

- 26 x 34 Attached 2 Stall Garage
- Full Finished Basement
- 24 x 30 Shed w/ Overhead Door, SVC Door

**East Mobile Home:** 2022, 15 x 76

**West Mobile Home:** 2021, 15 x 76

## Equipment List

**'10 Volvo L90F Payloader** w/Load Pro Scale System, Bucket, 19,592 hours

**JD 4760 FWA Tractor** w/PS, 3 pt, PTO, 4 Hydr, 480/80R46 Tires, Axle Duals, Suitcase Weights, SN 3684 ('93).

**JD 4440 2WD Tractor** w/PS, 3 pt, PTO, 3 Hydr, 20.8x38 Tires, Tach reads 3133 hours (believe rolled over), ('80)

**Wildcat 8600A mounted Snow Blower**

**JD 4955 FWA Tractor** w/PS, 3 pt, PTO, 3 Hydr, 42" Tires, Axle Duals, Tach reads 4349 hours, Suitcase Weights, SN 4148 ('90)

**JD 4960 FWA Tractor** w/PS, 3 pt, PTO, 4 Hydr, Q Tach, 18.4x42 Tires, Tach reads 2757 hours (believe rolled over), SN 2167 ('92)

**Side Dump'r SDR 228-60 28' Dump Wagon (has been tipped over).**

**Side Dump'r SDR 228-60 28' Dump Wagon**

**'20 ASV RT-120 Skid Steer** w/3561 hours

**JD 4850 FWA Tractor** w/'83, PS, 3 pt, PTO, 3 Hydr, Q Tach, 18.4x42 Tires, Tach reads 6000 hours (believe rolled over at least once)

**JD 4455 2WD Tractor** w/PS, 3 pt, PTO, 3 Hydr, 18.4x42 Tires, Tach reads 7575 hours, ('90)

**JD 7410 FWA Tractor** w/3 pt, PTO, 2+3 Hydr, 520/85R38 Tires, LH Shuttle, Loader Joystick (no loader), Tach reads 2582 hours

**Legend 1271 Legend Batwing Mower**

**NDE U850D Vertical Mixer Feed Wagon** w/Scale Tech Scale, Tandem Axles, Right Hand discharge. Bought new in 2024.

**JD 4760 FWA Tractor** w/PS, 3 pt, PTO, 3 Hydr, 18.4x42 Tires, Tach reads 7870 hours, SN 3507 ('93)

**Country Welding 14' Box Scraper**

**MFS 3612 12' Box Scraper**

**Liquid Manure Applicator w/Krone Pump**

**JD 4455 2WD Tractor** w/PS, 3 pt, PTO, 3 Hydr, 18.4x42 Tires, Tach reads 6520 hrs., SN 3507 ('93) -Cab Interior missing Cowl Cover

**Titan PTO Fogger**

**MFS 3612 12' Box Scraper**

**MFS 3614 14' Box Scraper**

**Hesston 6550 Self Propelled Swather**

**JD 235 Tandem Disk** w/Cone Blades, Hitch Welded

**'19 IH 7400 Single Axle Truck** w/Harsch 575H Super Duty Feed Wagon, LH Discharge, Digi-Star 2500V Int./Ext. Scale Displays, Auto Trans (2 pedal), 11R22.5 Tires, 9909 hrs / 36198 miles.

**'19 7400 Truck** w/ Roto Mix 620-16XD, 8252 hours, 42005 miles, Digi Star Scale, LH Discharge

**Volvo L70F Payloader** w/ Grapple Bucket, 24991 hours, 20.5-25 Tires

**'19 IH 7400 Truck** w/Roto Mix 620-16XD, 8227 hours, 45680 miles, Auto Trans (2 Pedal), Digi Star Scale.

**SAC Maxi Mixer 4750 Feed Wagon (Pin Hitch) w/ LH**

Discharge, Horizontal Auger Mixer, High Density Rotation, Digi Star Scale,  
Capacity Rating: 26,500 lbs. / 750 cu. ft. / Augers

**Volvo Bucket 9'W x 4'D x 54"T (6 yd)**

**SEC 8' Bucket w/ Grabtec 5 Tine Grapple, Double Cylinder**

**MFS 4212 Push Blade**

**MFS 4212 Push Blade**

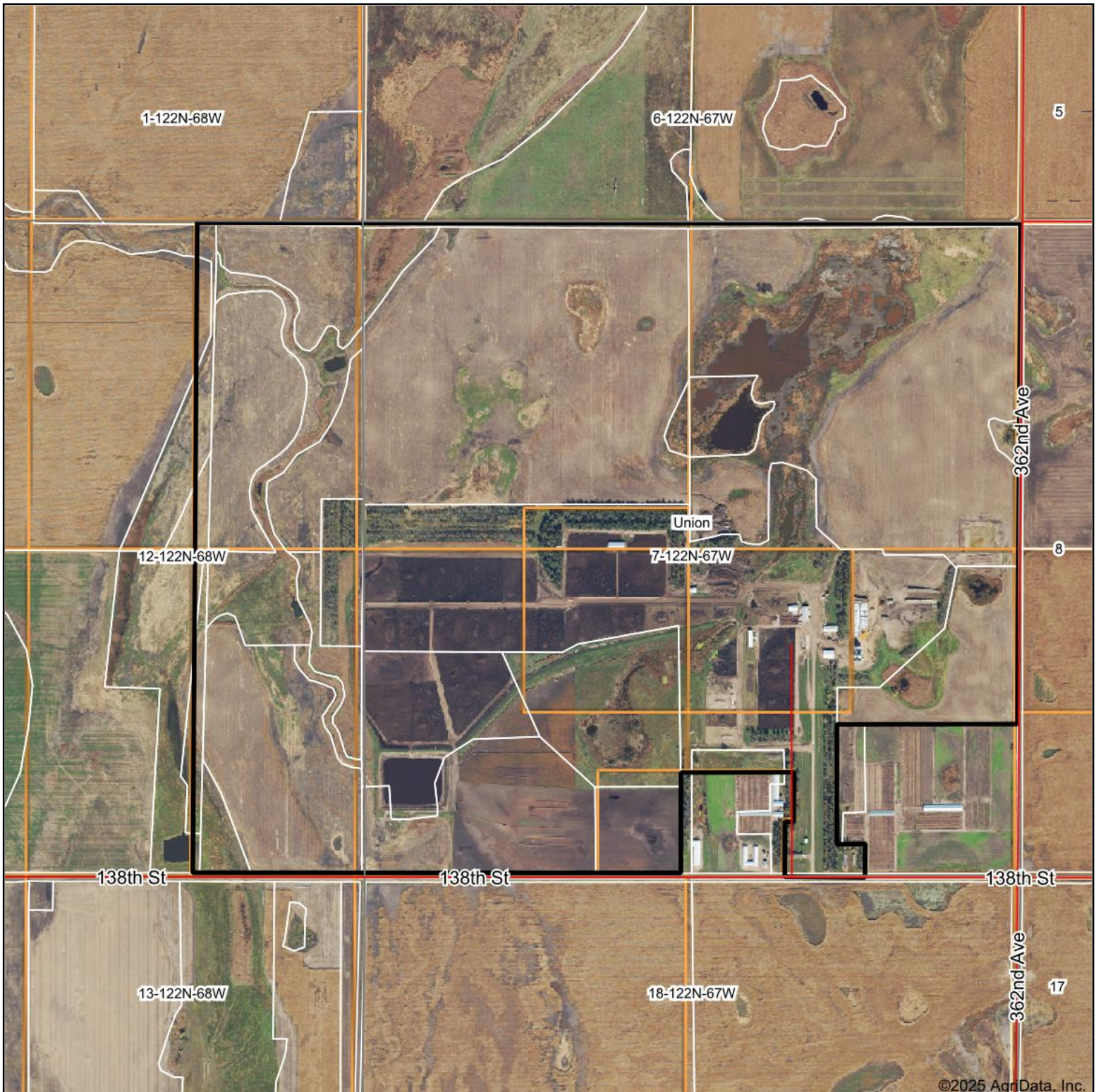
**JRB Pallet Forks (Payloader)**

**'17 Bale King 5100 Processor**

**Liquid Manure Drag Line Hose Reel & Hose**

**'89 JD 8450 4WD Tractor w/ 3 Hydr, PTO, Quad, Degelman 14' Dozer  
w/Hyd angle / lift**

# Aerial Map

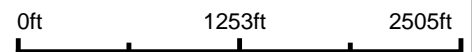


©2025 AgriData, Inc.

ANOTHER JARK/WORLIE AUCTION

(605) 225-1828  
[www.jarkworlie.com](http://www.jarkworlie.com)

Boundary Center: 45° 23' 48.87, -98° 57' 36.65



**7-122N-67W**  
**Edmunds County**  
**South Dakota**



Maps Provided By:

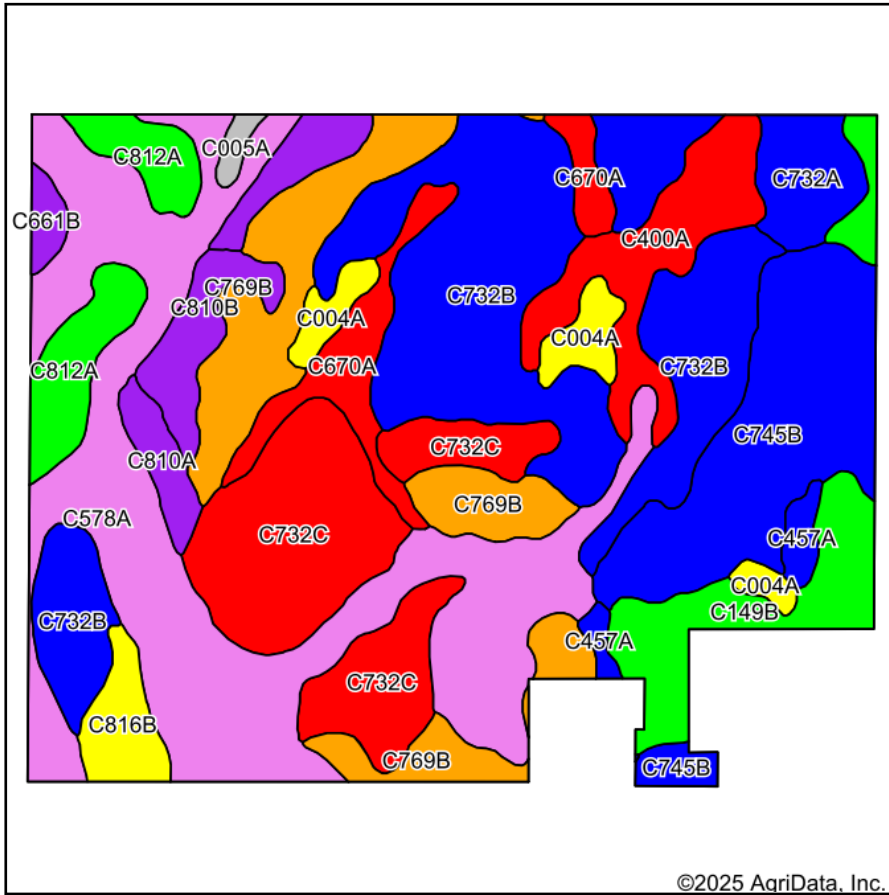
**surety**  
CUSTOMIZED ONLINE MAPPING

© AgriData, Inc. 2023 [www.AgriDataInc.com](http://www.AgriDataInc.com)

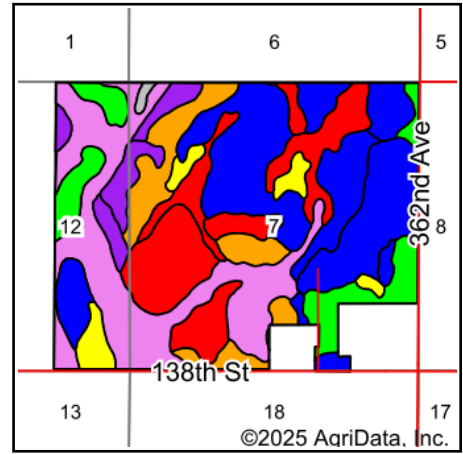
11/5/2025

Field borders provided by Farm Service Agency as of 5/21/2008.

# Soils Map



Soils data provided by USDA and NRCS.



State: **South Dakota**  
 County: **Edmunds**  
 Location: **7-122N-67W**  
 Township: **Union**  
 Acres: **742.21**  
 Date: **11/5/2025**



Maps Provided By:  
  
 CUSTOMIZED ONLINE MAPPING  
 © AgriData, Inc. 2023 www.AgriDataInc.com



Area Symbol: SD045, Soil Area Version: 26

Code	Soil Description	Acres	Percent of field	PI Legend	Non-Irr Class *c	Range Production (lbs/acre/yr)	Productivity Index
C578A	Ranslo-Harriet loams, 0 to 2 percent slopes, occasionally flooded	159.14	21.5%		Vls	2549	21
C732B	Bryant silt loam, 2 to 6 percent slopes	134.39	18.1%		Ile	2505	91
C732C	Bryant silt loam, 6 to 9 percent slopes	83.59	11.3%		IIle	2413	82
C745B	Bryant-Grassna silt loams, 2 to 6 percent slopes	72.07	9.7%		Ile	2568	90
C769B	Tally fine sandy loam, 2 to 6 percent slopes	66.56	9.0%		IIle	2532	60
C149B	Williams-Bowbells-Tonka complex, 0 to 6 percent slopes	36.93	5.0%		Ile	3197	77
C400A	Bearden silt loam, 0 to 2 percent slopes	33.96	4.6%		Ile	3521	89
C732A	Bryant silt loam, 0 to 2 percent slopes	29.10	3.9%		IIc	2560	91
C812A	Spottswood loam, west, 0 to 2 percent slopes	26.62	3.6%		IIIs	3384	72
C670A	Bowbells-Niobell loams, 0 to 3 percent slopes	25.36	3.4%		IIc	2778	80
C810A	Bowdle loam, 0 to 2 percent slopes	18.18	2.4%		IIIs	2321	56
C004A	Tonka silt loam, 0 to 1 percent slopes	15.94	2.1%		IVw	4324	44
C810B	Bowdle loam, 2 to 6 percent slopes	15.31	2.1%		IIle	2301	56
C816B	Lehr loam, 2 to 6 percent slopes	12.17	1.6%		IIle	1719	42
C457A	Grassna silt loam, 0 to 2 percent slopes	6.43	0.9%		IIc	2421	98
C661B	Niobell-Noonan loams, 3 to 6 percent slopes	4.06	0.5%		IIle	2223	59
C005A	Southam silty clay loam, 0 to 1 percent slopes	2.40	0.3%		VIIIw	5871	5

Soils data provided by USDA and NRCS.

Maps Provided By:

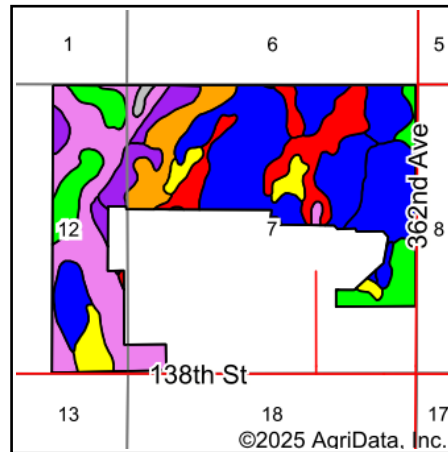
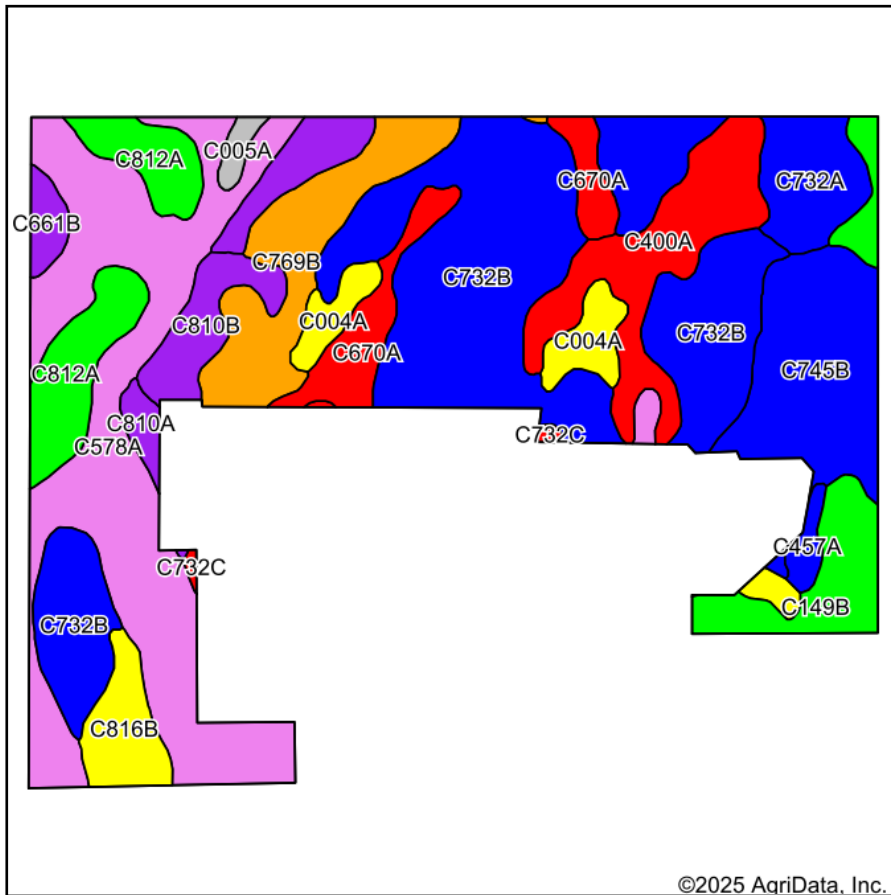


© AgriData, Inc. 2023 [www.AgriDataInc.com](http://www.AgriDataInc.com)

Code	Soil Description	Acres	Percent of field	PI Legend	Non-Irr Class *c	Range Production (lbs/acre/yr)	Productivity Index
<b>Weighted Average</b>					<b>3.23</b>	<b>2662.6</b>	<b>66.5</b>

\*c: Using Capabilities Class Dominant Condition Aggregation Method

# Soils Map



State: **South Dakota**  
 County: **Edmunds**  
 Location: **7-122N-67W**  
 Township: **Union**  
 Acres: **483.03**  
 Date: **12/29/2025**



Soils data provided by USDA and NRCS.

©2025 AgriData, Inc.

Area Symbol: SD045, Soil Area Version: 26

Code	Soil Description	Acres	Percent of field	PI Legend	Non-Irr Class *c	Range Production (lbs/acre/yr)	Productivity Index
C732B	Bryant silt loam, 2 to 6 percent slopes	116.88	24.1%		Ile	2505	91
C578A	Ranslo-Harriet loams, 0 to 2 percent slopes, occasionally flooded	97.99	20.3%		VIs	2549	21
C745B	Bryant-Grassna silt loams, 2 to 6 percent slopes	39.56	8.2%		Ile	2568	90
C400A	Bearden silt loam, 0 to 2 percent slopes	33.90	7.0%		Ile	3521	89
C769B	Tally fine sandy loam, 2 to 6 percent slopes	31.86	6.6%		IIle	2532	60
C732A	Bryant silt loam, 0 to 2 percent slopes	29.34	6.1%		IIc	2560	91
C812A	Spottswood loam, west, 0 to 2 percent slopes	26.78	5.5%		IIIs	3384	72
C149B	Williams-Bowbells-Tonka complex, 0 to 6 percent slopes	22.97	4.8%		Ile	3197	77
C670A	Bowbells-Niobell loams, 0 to 3 percent slopes	18.78	3.9%		IIc	2778	80
C004A	Tonka silt loam, 0 to 1 percent slopes	15.34	3.2%		IVw	4324	44
C810A	Bowdle loam, 0 to 2 percent slopes	13.32	2.8%		IIIs	2321	56
C810B	Bowdle loam, 2 to 6 percent slopes	12.72	2.6%		IIle	2301	56
C816B	Lehr loam, 2 to 6 percent slopes	12.17	2.5%		IIle	1719	42
C661B	Niobell-Noonan loams, 3 to 6 percent slopes	4.38	0.9%		IIle	2223	59
C457A	Grassna silt loam, 0 to 2 percent slopes	3.37	0.7%		IIc	2421	98
C005A	Southam silty clay loam, 0 to 1 percent slopes	2.40	0.5%		VIIIw	5871	5
C732C	Bryant silt loam, 6 to 9 percent slopes	1.27	0.3%		IIle	2413	82

Soils data provided by USDA and NRCS.

Maps Provided By:



© AgriData, Inc. 2025

www.AgriDataInc.com

Code	Soil Description	Acres	Percent of field	PI Legend	Non-Irr Class *c	Range Production (lbs/acre/yr)	Productivity Index
<b>Weighted Average</b>					<b>3.12</b>	<b>2728.6</b>	<b>67.1</b>

\*c: Using Capabilities Class Dominant Condition Aggregation Method