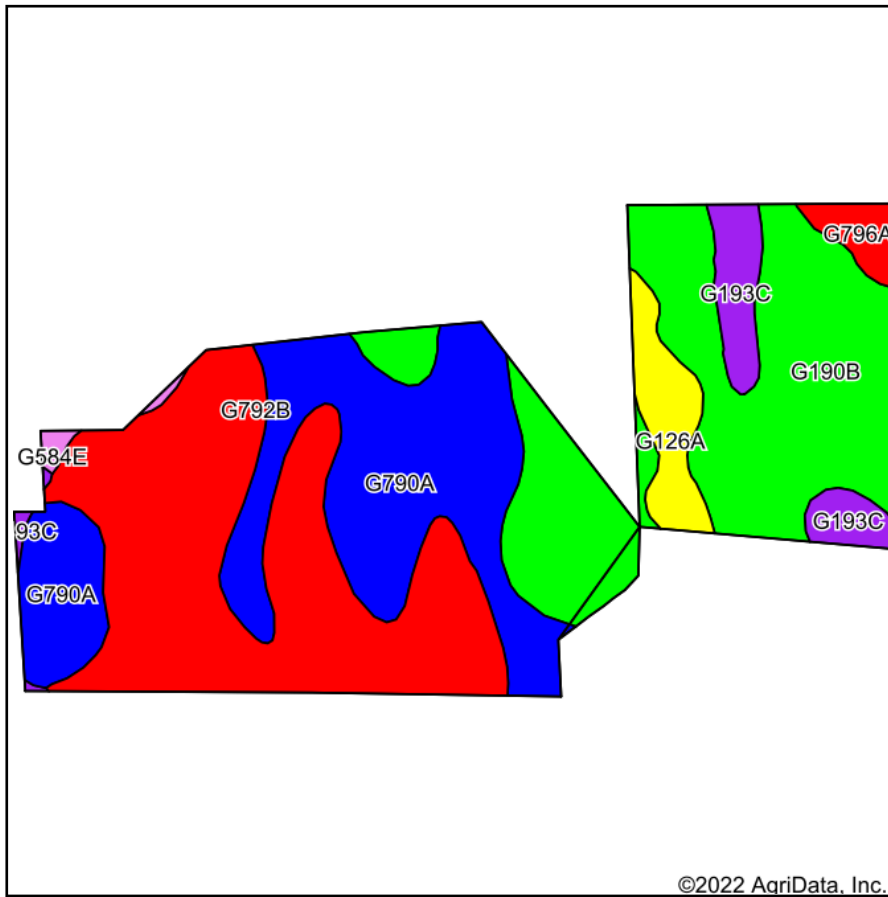
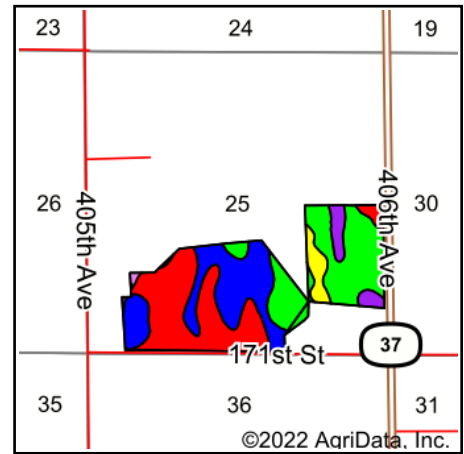


Soils Map



Soils data provided by USDA and NRCS.



State: **South Dakota**
 County: **Spink**
 Location: **25-117N-61W**
 Township: **Prairie Center**
 Acres: **168.49**
 Date: **9/3/2022**

Maps Provided By:

 CUSTOMIZED ONLINE MAPPING
 © AgriData, Inc. 2021 www.AgriDataInc.com



Area Symbol: SD115, Soil Area Version: 22

Code	Soil Description	Acres	Percent of field	PI Legend	Non-Irr Class *c	Range Production (lbs/acre/yr)	Productivity Index	*n NCCPI Soybeans
G792B	Kranzburg-Brookings-Buse complex, 0 to 6 percent slopes	53.58	31.8%		Ile	2712	82	61
G190B	Forman-Buse-Aastad loams, 1 to 6 percent slopes	51.97	30.8%		Ile	2874	79	57
G790A	Kranzburg-Brookings silt loams, 0 to 2 percent slopes	44.82	26.6%		Ilc	2806	91	61
G193C	Forman-Buse-Langhei loams, 6 to 9 percent slopes	7.67	4.6%		IVe	2625	52	51
G126A	Cresbard-Cavour-Heil complex, 0 to 3 percent slopes	6.89	4.1%		IIIIs	2535	45	32
G796A	Kranzburg-Cresbard silt loams, 0 to 2 percent slopes	2.73	1.6%		Ilc	2753	81	54
G584E	Edgeley-Buse loams, 9 to 25 percent slopes	0.83	0.5%		VIe	2741	24	41
Weighted Average					2.15	2776.6	80.3	*n 57.9

*n: The aggregation method is "Weighted Average using all components"

*c: Using Capabilities Class Dominant Condition Aggregation Method

Soils data provided by USDA and NRCS.